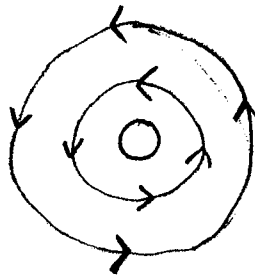


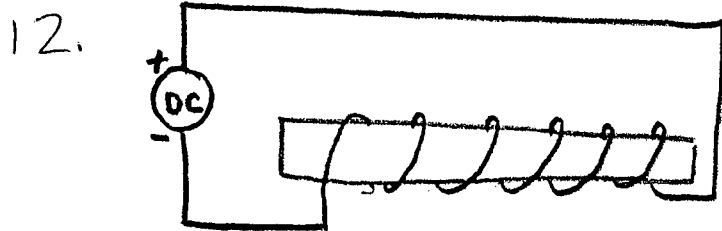
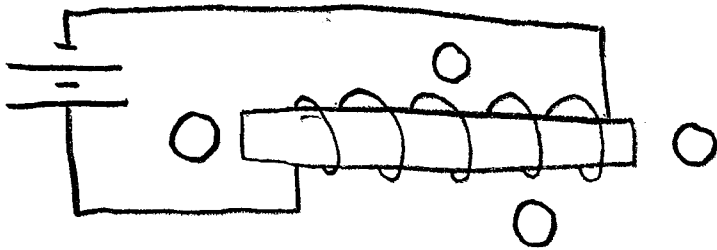
9. Draw the magnetic field that results from the following current (1)



10. Draw the direction of the electron flow that gives the following magnetic field (1)



11. Draw the directions that the compass needle would point, and the direction of the conventional current, (2)



Draw the direction of the conventional current, and the position of the north and south poles. (2)

13. Insert a cell into the space in this circuit that would make the following electromagnet (1)

